



SLE 23-024 Industrial Equipment Sale





SLE 23-024 Industrial Equipment Sale





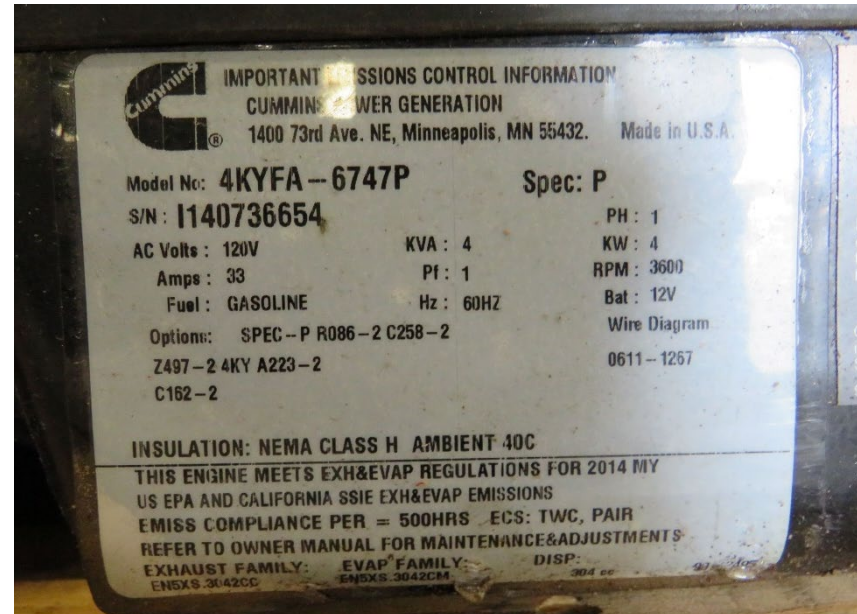
SLE 23-024 Industrial Equipment Sale



| Type / Typ Modell / Type | | ELF 1001/920 | |
|--|-----------------|--|----------------------------|
| Capacity / Tragkraft Kapazität / Capaciteit | | | |
| Serial no / Serienr. Serie nr / Nr. | LX 111E14085432 | Hydr.motor / Hy-Motor Hydr.motor / Hydr.motor | 900 W ^{S3} 10% |
| Prod.year / Baujahr Prod. år / Prod.jaar | 2011 | Battery / Batterie Batteri / Batterij | 12 V |
| Own weight / Eigengewicht Egenvekt / Ledig Gew. | 473 lb | Bat.weight / Bat.Gewicht Batterivekt / Bat.gewicht | 40 - 90 lb |
| Lifting height / Hubhöhe Løftehøyde / Hefhoogte | 36 " | Interthor 1817 Beach Street, Broadview Phone: (708)345-1270, IL 60155 Made in Denmark by LOGITRANS for INTERTHOR inc. | |
| Load centre / Lsp. Lastesenter / Laadcenter | 24 " | | |



SLE 23-024 Industrial Equipment Sale





SLE 23-024 Industrial Equipment Sale





SLE 23-024 Industrial Equipment Sale





SLE 23-024 Industrial Equipment Sale





SLE 23-024 Industrial Equipment Sale



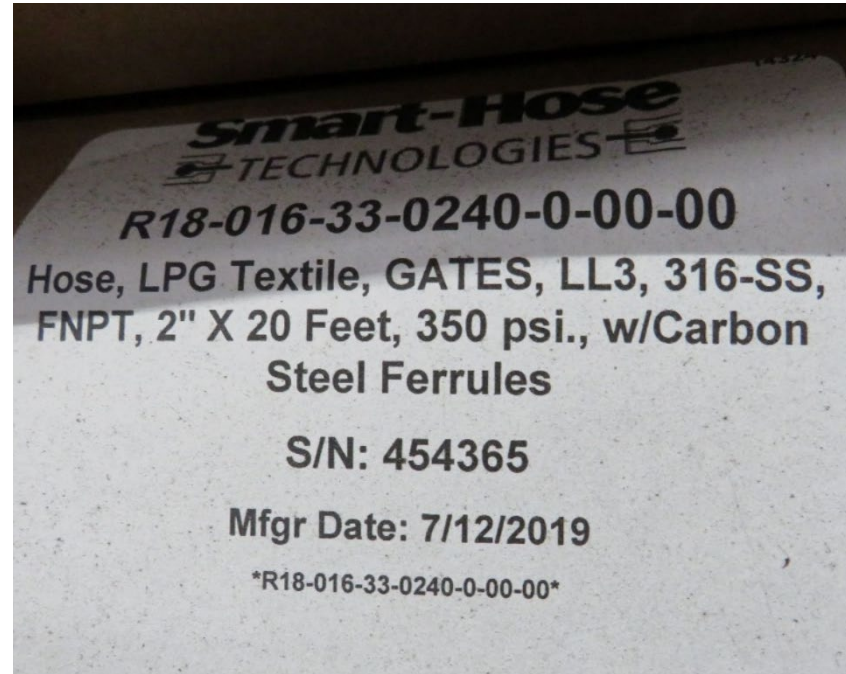


SLE 23-024 Industrial Equipment Sale



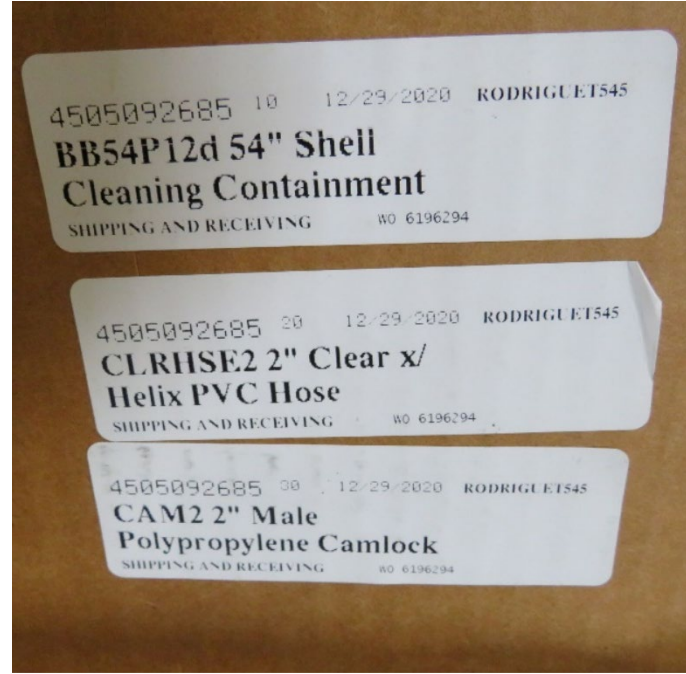


SLE 23-024 Industrial Equipment Sale





SLE 23-024 Industrial Equipment Sale





SLE 23-024 Industrial Equipment Sale



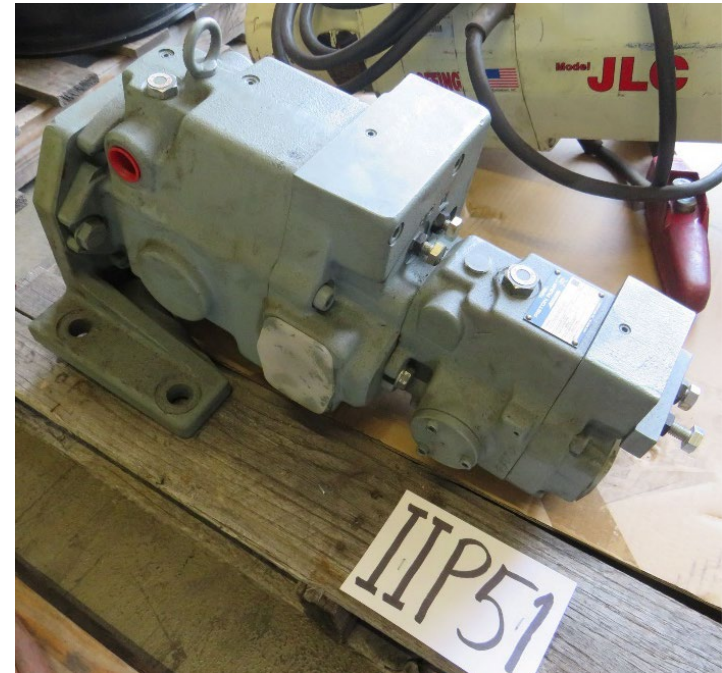


SLE 23-024 Industrial Equipment Sale





SLE 23-024 Industrial Equipment Sale





SLE 23-024 Industrial Equipment Sale





SLE 23-024 Industrial Equipment Sale





SLE 23-024 Industrial Equipment Sale





SLE 23-024 Industrial Equipment Sale





SLE 23-024 Industrial Equipment Sale





SLE 23-024 Industrial Equipment Sale





SLE 23-024 Industrial Equipment Sale





SLE 23-024 Industrial Equipment Sale





SLE 23-024 Industrial Equipment Sale





SLE 23-024 Industrial Equipment Sale

NRN 89

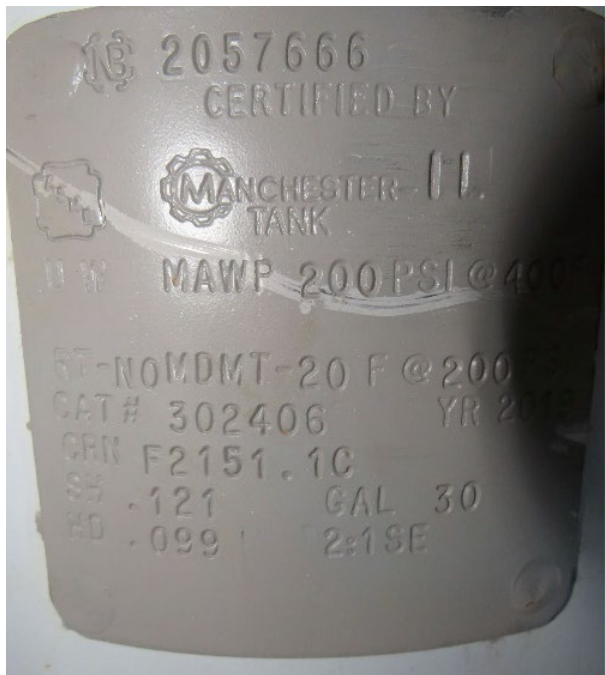


NRN 90



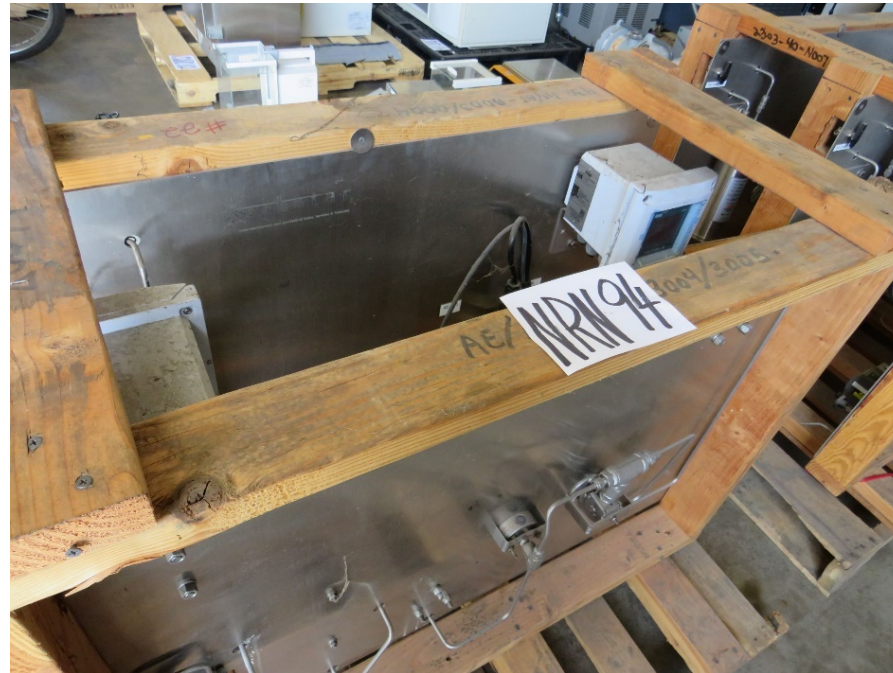
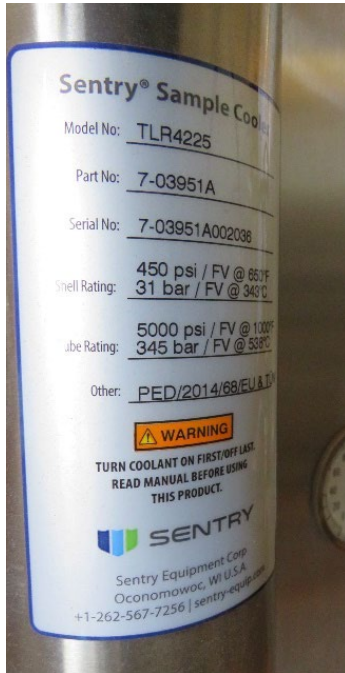


SLE 23-024 Industrial Equipment Sale





SLE 23-024 Industrial Equipment Sale





SLE 23-024 Industrial Equipment Sale





SLE 23-024 Industrial Equipment Sale





SLE 23-024 Industrial Equipment Sale





SLE 23-024 Industrial Equipment Sale



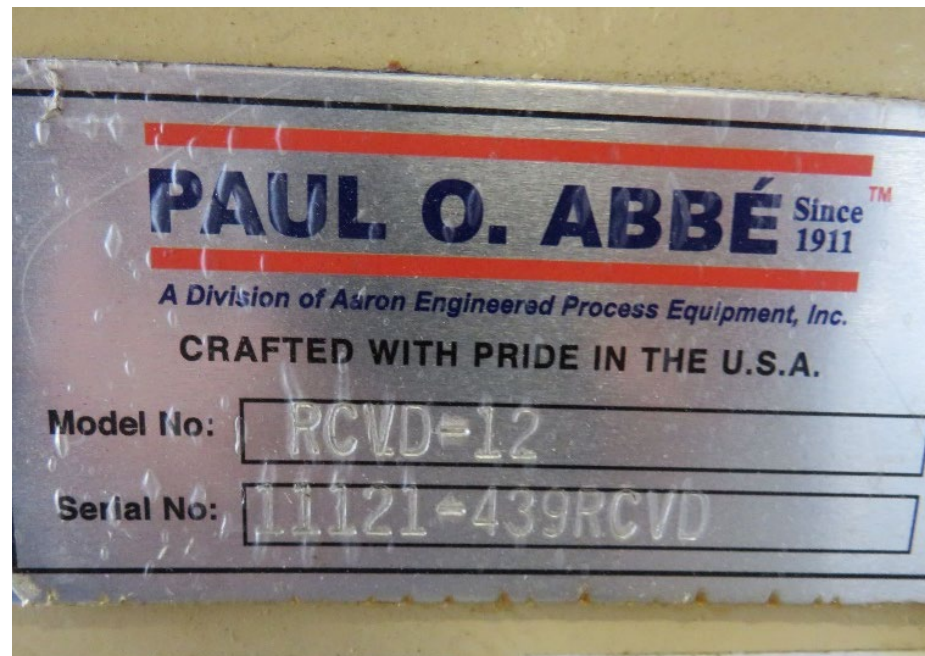


SLE 23-024 Industrial Equipment Sale





SLE 23-024 Industrial Equipment Sale





SLE 23-024 Industrial Equipment Sale





SLE 23-024 Industrial Equipment Sale



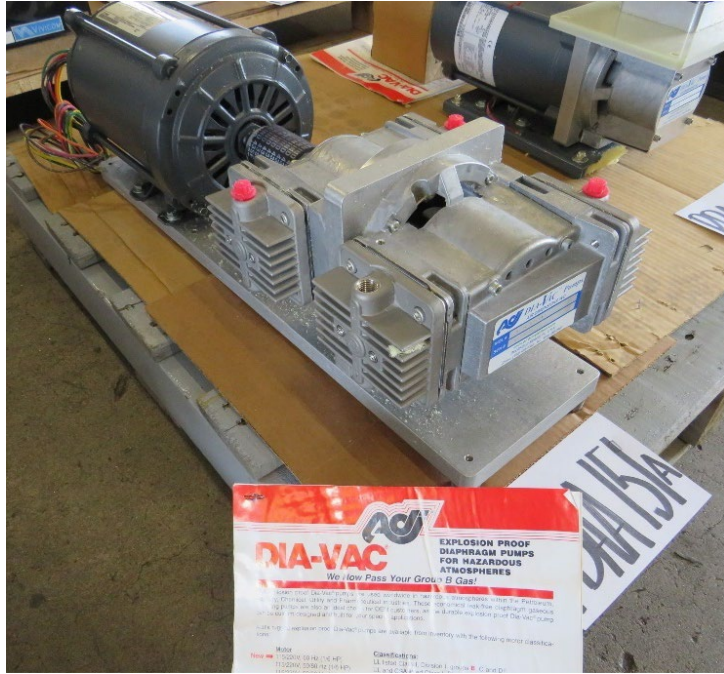


SLE 23-024 Industrial Equipment Sale





SLE 23-024 Industrial Equipment Sale





SLE 23-024 Industrial Equipment Sale





SLE 23-024 Industrial Equipment Sale





SLE 23-024 Industrial Equipment Sale





SLE 23-024 Industrial Equipment Sale





SLE 23-024 Industrial Equipment Sale





SLE 23-024 Industrial Equipment Sale



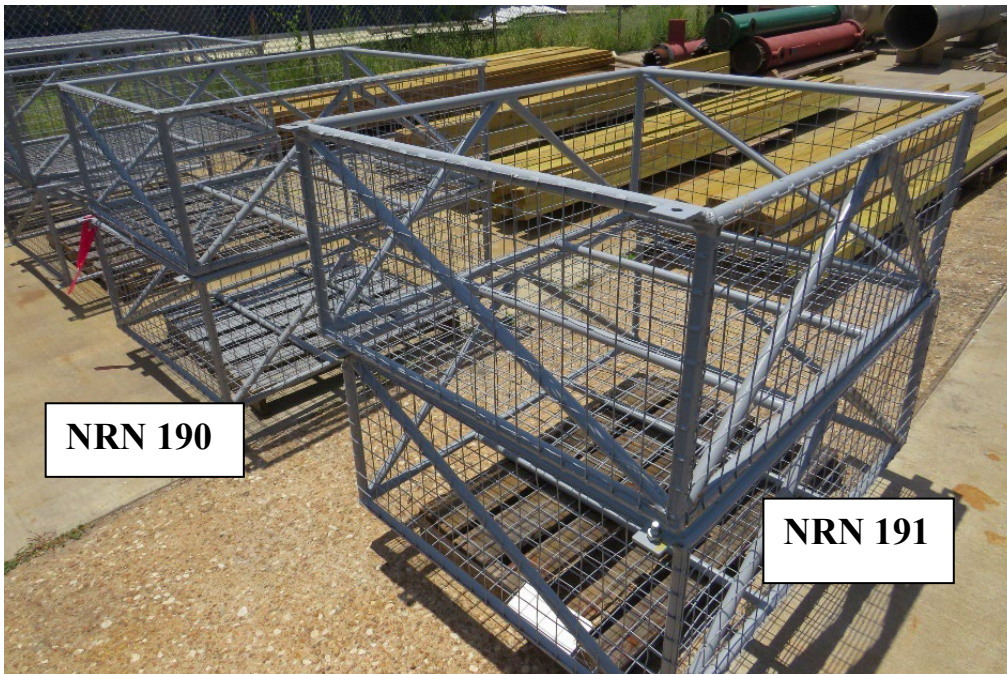
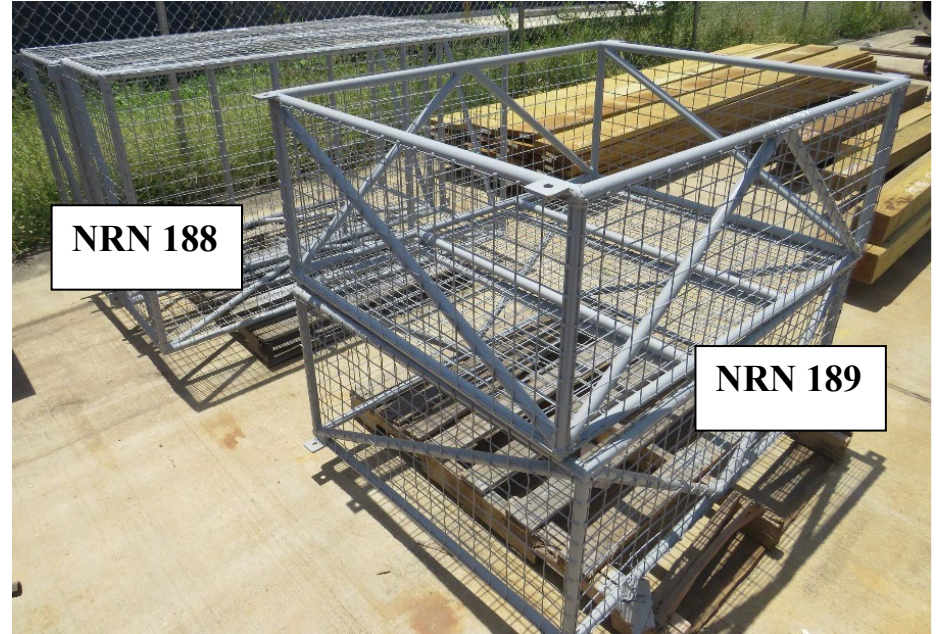


SLE 23-024 Industrial Equipment Sale





SLE 23-024 Industrial Equipment Sale





SLE 23-024 Industrial Equipment Sale



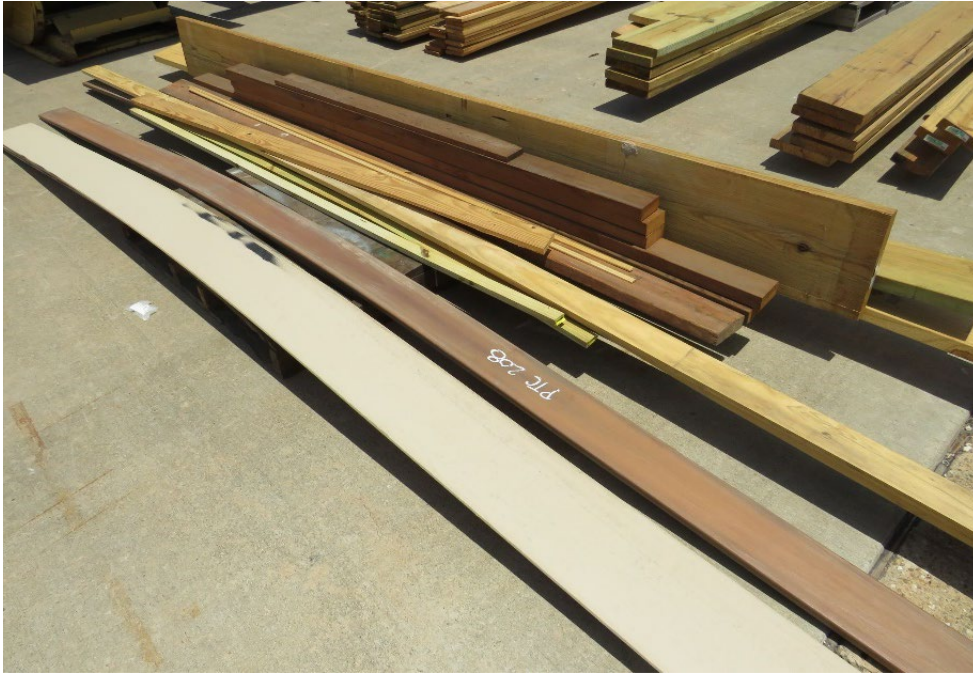


SLE 23-024 Industrial Equipment Sale





SLE 23-024 Industrial Equipment Sale



PTC 210





SLE 23-024 Industrial Equipment Sale





SLE 23-024 Industrial Equipment Sale





SLE 23-024 Industrial Equipment Sale



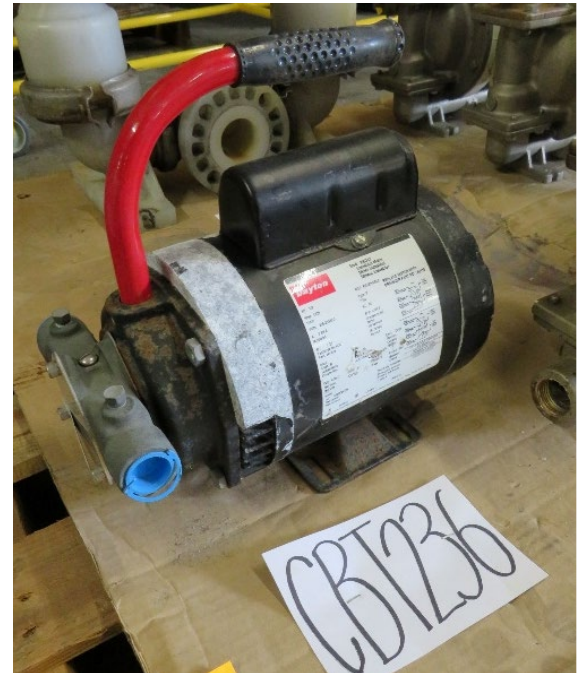
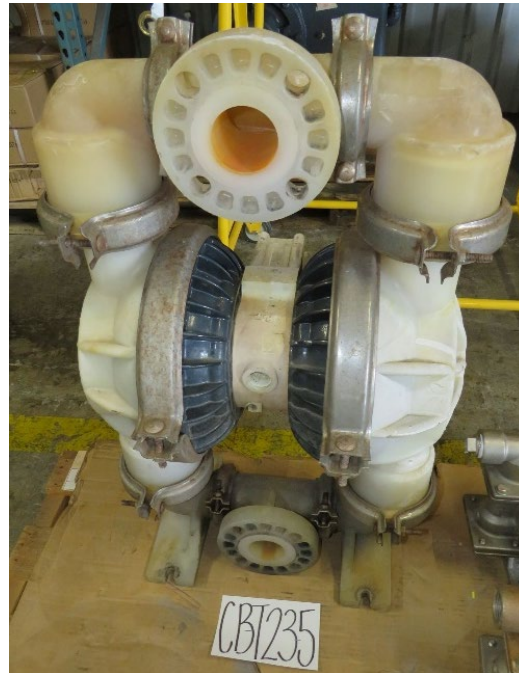
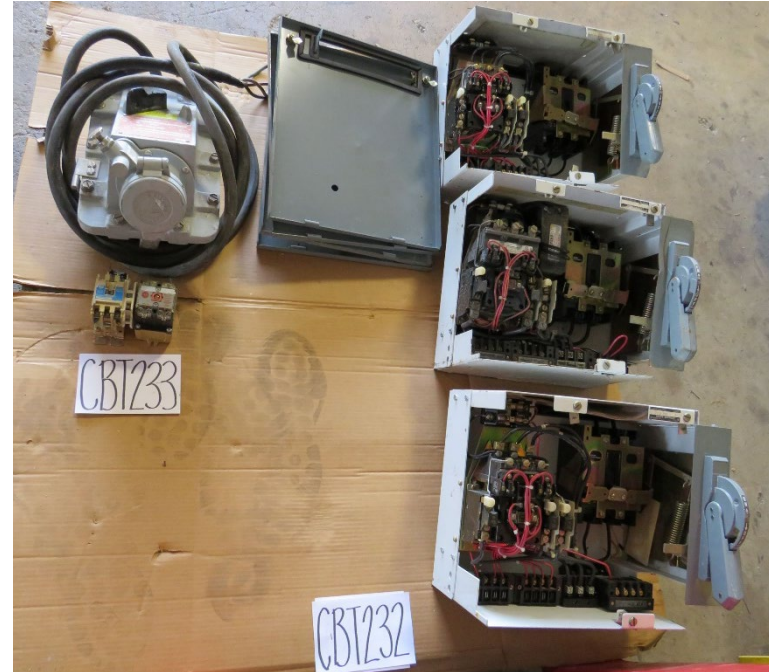


SLE 23-024 Industrial Equipment Sale





ADDED LOTS BELOW





SLE 23-024 Industrial Equipment Sale





SLE 23-024 Industrial Equipment Sale



EATON | Cutler-Hammer

DRY TYPE DISTRIBUTION TRANSFORMER
TRANSFORMADOR DE DISTRIBUCION DE TIPO SECO

DESIGN No.: V45006 SERIES/SERIE: B
No. DE DISEÑO: MFG. DATE: JAN /06/2005
FECHA DE MANUF.

CATALOG No./ No. CATALOGO: **V48M28E45B**

CLASS AA DT-3 THREE PHASE TRANSFORMER 60 HZ SERIAL No./ No. DE SERIE: J05A00315
CLASE TRANSFORMADOR TRIFASICO

PRI. VOLTS: 480 DELTA SEC.: 208Y/120 4.5 % IMP. @ 170 °C

KVA: 45 FRAME GAB. 912A CONT. 150 °C RISE/ ELEVACION MAXIMA: 150 °C WEIGHT/ PEBD: 305 LB / 138 KG.

| VOLTS | TAP |
|-------|-----|
| 504 | 1 |
| 492 | 2 |
| 480 | 3 |
| 468 | 4 |
| 456 | 5 |
| 444 | 6 |
| 432 | 7 |

PR TAP POSITION, POSICION DE SERVIDORES DEL PRIMARIO

| | |
|---|----|
| 2 | -1 |
| 4 | -3 |
| 6 | -5 |
| 8 | -7 |

UL LISTED TRANSFORMER

BIL/NBAI PRI 10 KV SEC 10 KV

ENCLOSURE INDOOR TYPE 2 OR RA-INPROOF WITH WEATHERSHIELD WS31. GABINETE: INTERIOR TIPO NEMA 2 O INTERFERE TIPO 3R CON TOLVA WS31.

VENT. OPENING SHALL BE 8 INCH MINIMUM FROM WALLS OR OTHER OBSTRUCTIONS. LA DISTANCIA MINIMA ENTRE LA APERTURA DE VENTILACION Y CUALQUIER OBSTRUCCION O PARED DEBERA SER 13 cm.

MAXIMUM TERMINAL COMPARTMENT TEMP. RISE IS 5°C ABOVE AMBIENT. ELEVACION MAXIMA DE TEMP. EN COMPARTIMIENTO DE TERMINALES ES DE 5°C SOBRE EL AMBIENTE.

MADE IN MEXICO REV. B



EGS **HEVI-DUTY**

Electrical Group

(800) 377-4384
www.sola-hevi-duty.com

SHIELDED DRIVE ISOLATION TRANSFORMER

CATALOG NO. **DT651H51S**

51 KVA 3 PHASE 60 HERTZ

HIGH VOLTAGE: **460 DELTA** 4.88 % IZ

LOW VOLTAGE: **460Y/266** L.V. AMPS 64

NEMA : TYPE 1 150 C RISE APP. WEIGHT 340 LBS.

NEMA : TYPE 3R if used with Weather Shield # WS14

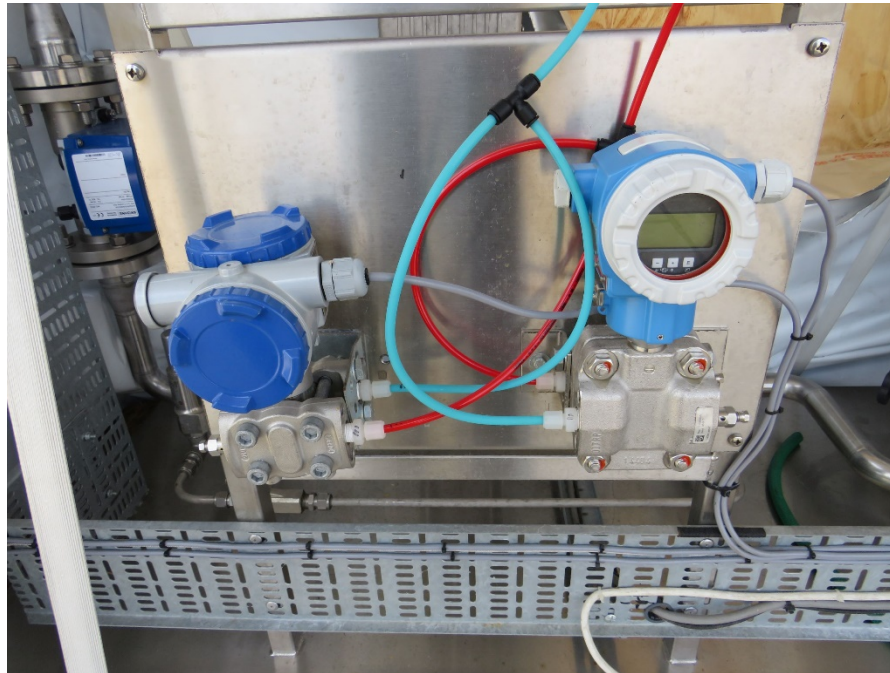
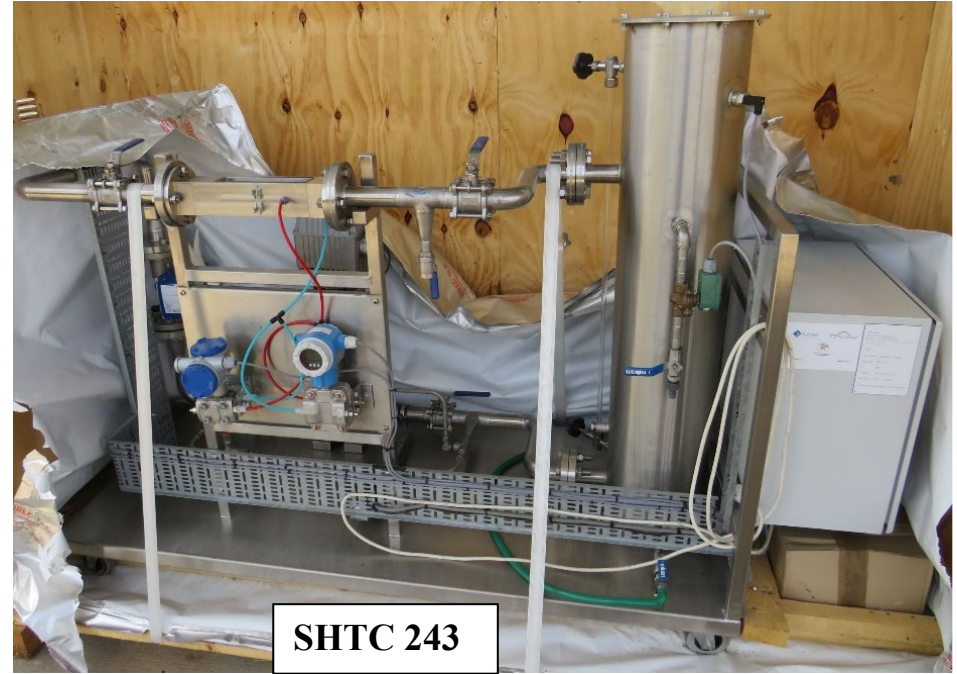
RoHS 2002/95/EC Wiring Diagram on inside front cover

De-energize Transformer Before Removing Cover

Class AA 220 Insulation System 759T00 HD220F-WMS 0809R 025



SLE 23-024 Industrial Equipment Sale





SLE 23-024 Industrial Equipment Sale

